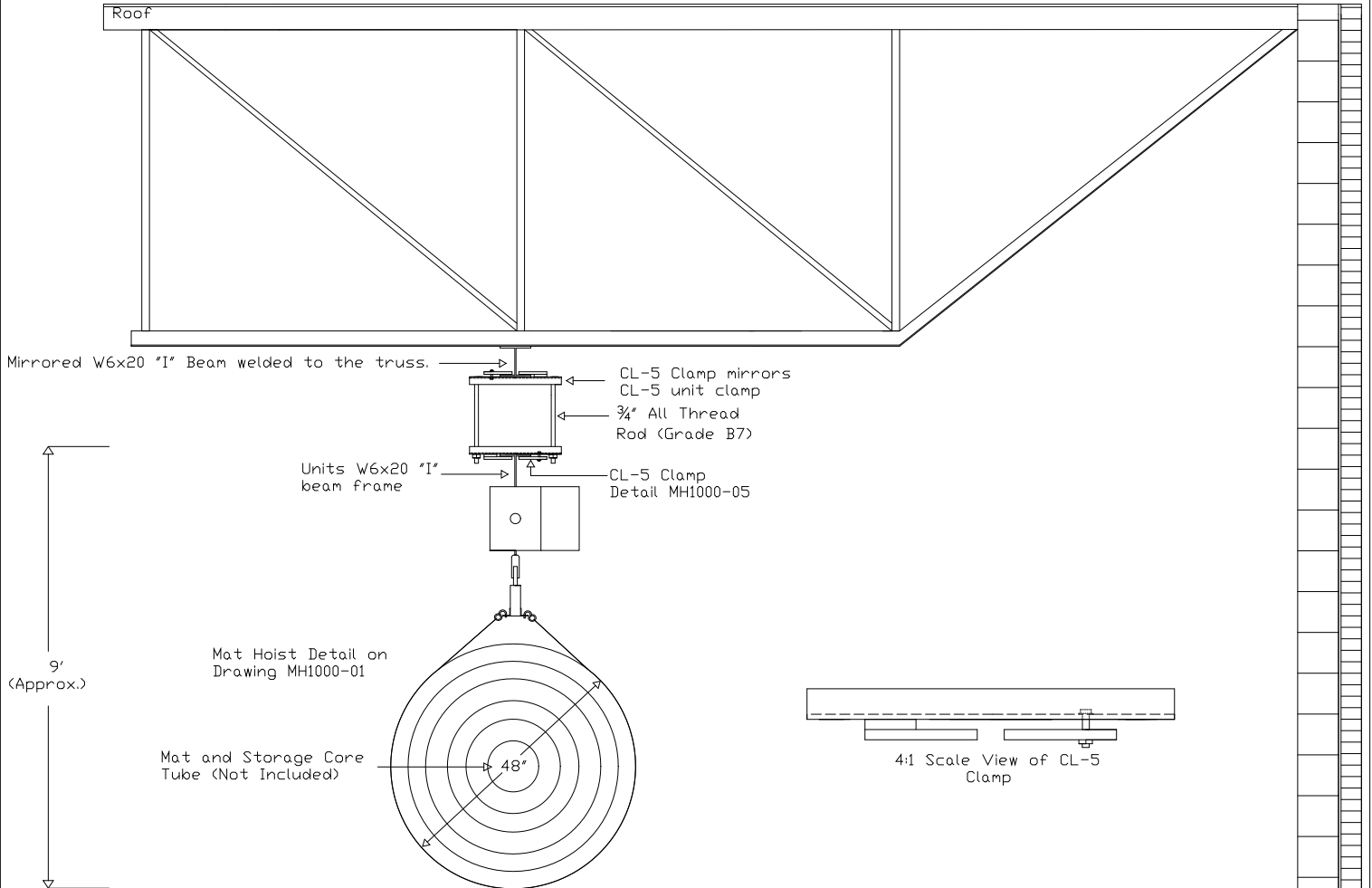


Illustrates: Perpendicular suspension for truss spans greater than 20'.



Note: In installation where truss centers are greater than 20' a mirrored W6x20 I beam is used for perpendicular suspension to truss.

Note: Structural Strength of Truss & Wall NOT Responsibility of Mat Hoist Manufacturer.

<p>NGE Inc. P.O. Box 370/Industrial Park 302 North Erickson Roland, IA 50236</p>	<p>Mat Hoist<sup>®</sup> 1000</p> <p>Drawing MH1000-21</p>	<p>Phone: (515)-388-4118 Fax: (515) 388-4340 Email: mathoist@mathoist.com Website: www.mathoist.com</p>
--	--	---