

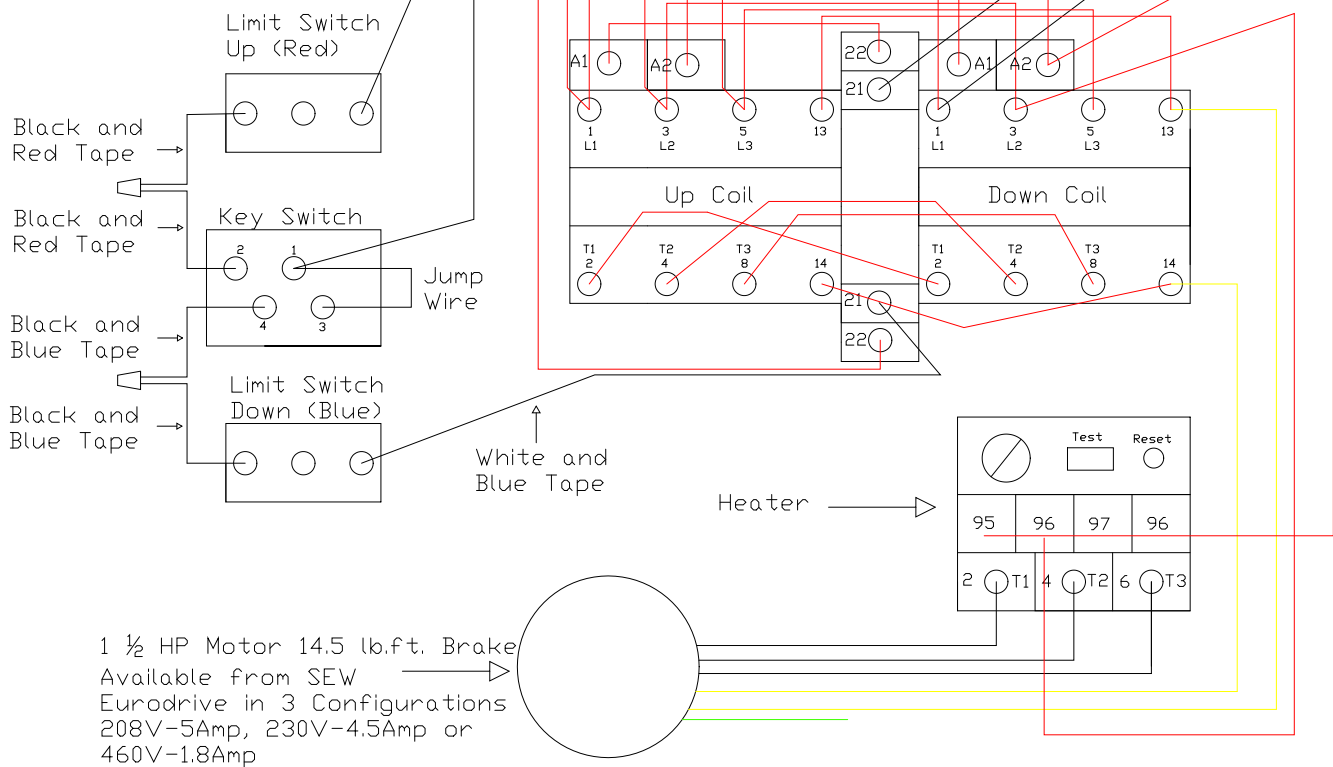
Electrician Note: This unit has been factory tested. Rotation must be correct with limit switches. See key switch name plate for Up/Down direction. DO NOT locate the key switch under the Mat Hoisto. Place switch to one side of unit where motion can be safely viewed.

Building Source Power

Green - Ground  
Yellow - Break  
Black - Power

208,230 or 460 volts

White and Red Tape



NGE Inc.  
P.O. Box 370/Industrial Park  
302 North Erickson  
Roland, IA 50236

Mat Hoisto 1000  
Mat Hoisto Wiring Schematic

Phone: (515)-388-4118  
Fax: (515) 388-4340  
Email: mathoist@mathoist.com  
Website: www.mathoist.com