

17,500 lbs Safety  
Certified Load Tested

CL-5 unit clamps attach to suspension clamps,  
or structural truss or wall bracket. View  
Drawings MH1000-06,07 for Attachments

See Drawing # MH1000-04

Four (4) Grade 8 Nuts With Lock  
Washers Included

3/4" x 18" Grade B7 All Thread Rod Included

3/4" Grade 8 Nut  
Mat Hoisto 20' Long I-Beam  
(W6 x 20) Frame

2" Diameter x 20' Long  
Solid (Keyed) Shaft

Mat Hoisto with 1 1/2hp 208, 230 or 460  
Three (3) Phase Industrial Motor with 18  
Gauge Steel Cover Housing (Grey)

Forked End (7 x 19) 5/16"  
Aircraft Cable

S-Hook to Load Bar

Load Bar (2" x 6" Tubing) 40' Long

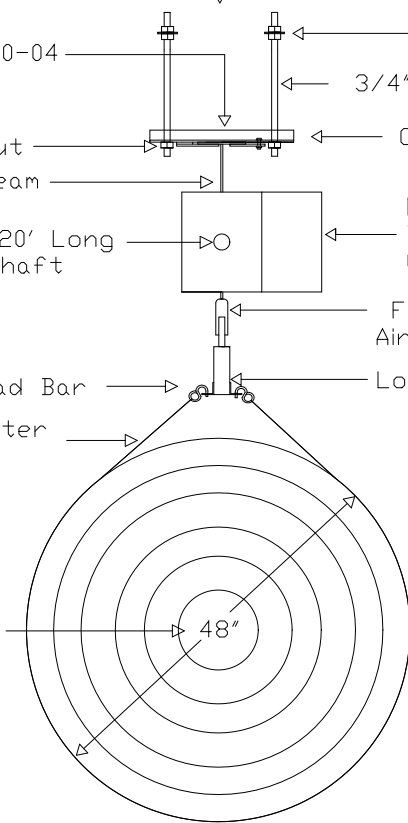
Vinyl Coated Polyester  
One Piece 40' Long  
Sling (Grey)

Illustrates: Side view of MH1000  
suspended perpendicular to  
buildings truss system.

9'  
(Approx.)

Mat Storage Tube by  
Mat Manufacturer

Up to Two (2) 45' x 45' Mats  
Rolled Together (Not Included)  
Note: Mats can be one piece  
or multiple sections



Note: Structural Strength of Truss & Wall NOT Responsibility of Mat Hoisto Manufacturer.

NGE Inc.  
P.O. Box 370/Industrial Park  
302 North Erickson  
Roland, IA 50236

Mat Hoist 1000

Side View

Drawing #  
MH1000-02

Phone: (515)-388-4118  
Fax: (515) 388-4340  
Email: mathoist@mathoist.com  
Website: www.mathoist.com