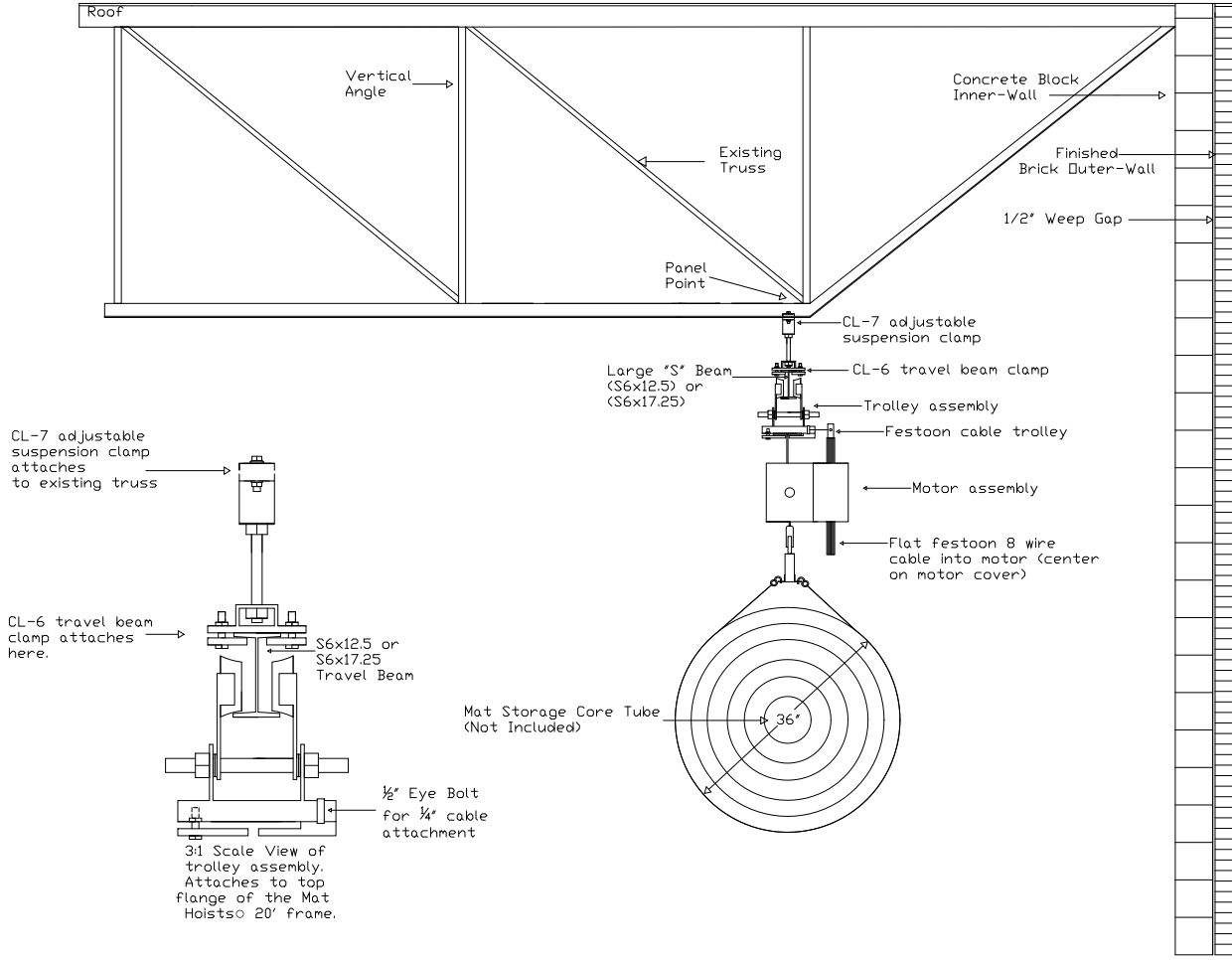


Note: Truss exceeding 10' apart need NGE and architectural approval.

Illustrates: Travel perpendicular to truss system. Using S6x12.5 travel beam directly attached to truss with CL-7 suspension clamp.



Note: Perpendicular truss spans under 10' use S6x12.5 travel beam, spans 10'-15' use S6x17.25

<p>Note: Structural Strength of Truss & Wall NOT Responsibility of Mat Hoist Manufacturer.</p>		
<p>NGE Inc. P.O. Box 370/Industrial Park 302 North Erickson Roland, IA 50236</p>	<p>Mat Hoist 2000 Side View End First Travel Unit Drawing MH3000-02</p>	<p>Phone: (515)-388-4118 Fax: (515) 388-4340 Email: mathoist@mathoist.com Website: www.mathoist.com</p>