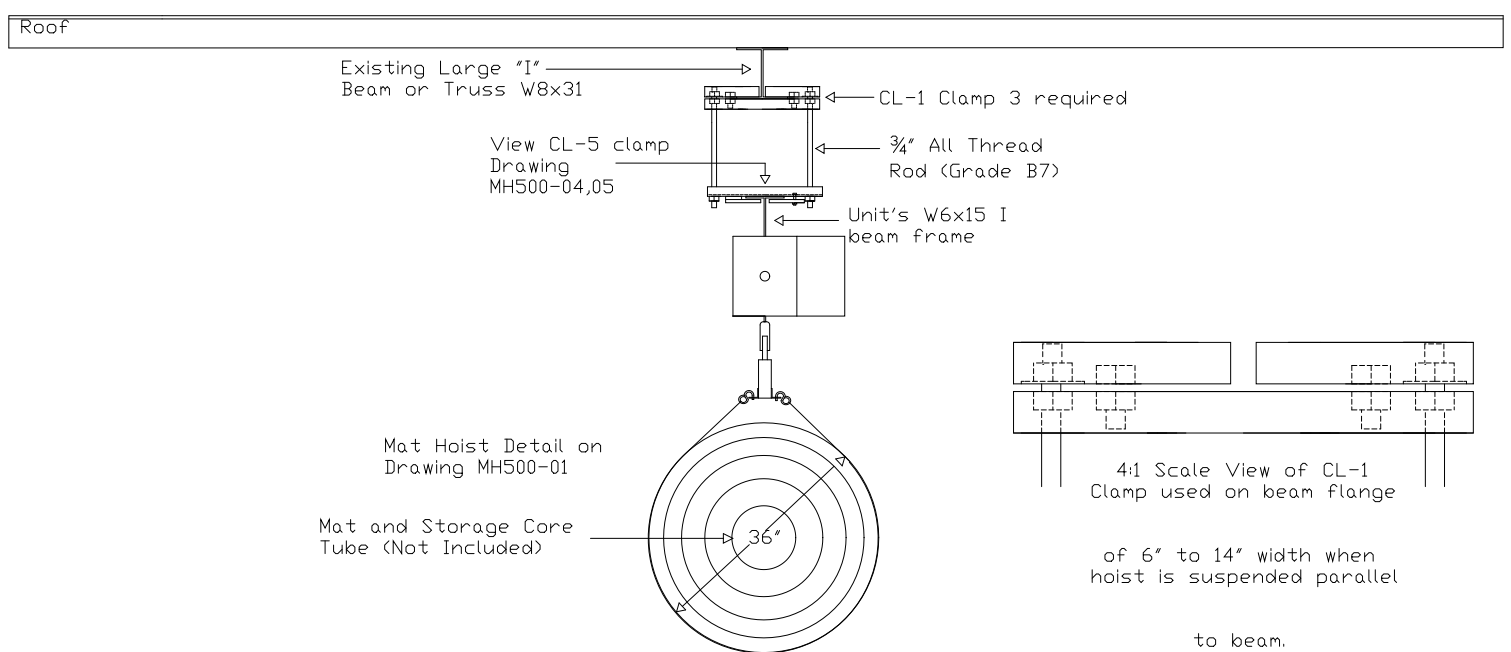


Illustrates: Use of CL-1 clamps to a single wide flange beam. Suspended parallel to beam.



Note: Structural Strength of Truss & Wall NOT Responsibility of Mat Hoisto Manufacturer.

| | | |
|--|---|---|
| <p>NGE Inc. P.O. Box 370/Industrial Park 302 North Erickson Roland, IA 50236</p> | <p>Mat Hoisto 500 CL-1 Clamp to "I" Beam Drawing MH500-17</p> | <p>Phone: (515)-388-4118 Fax: (515) 388-4340 Email: mathoist@mathoist.com Website: www.mathoist.com</p> |
|--|---|---|