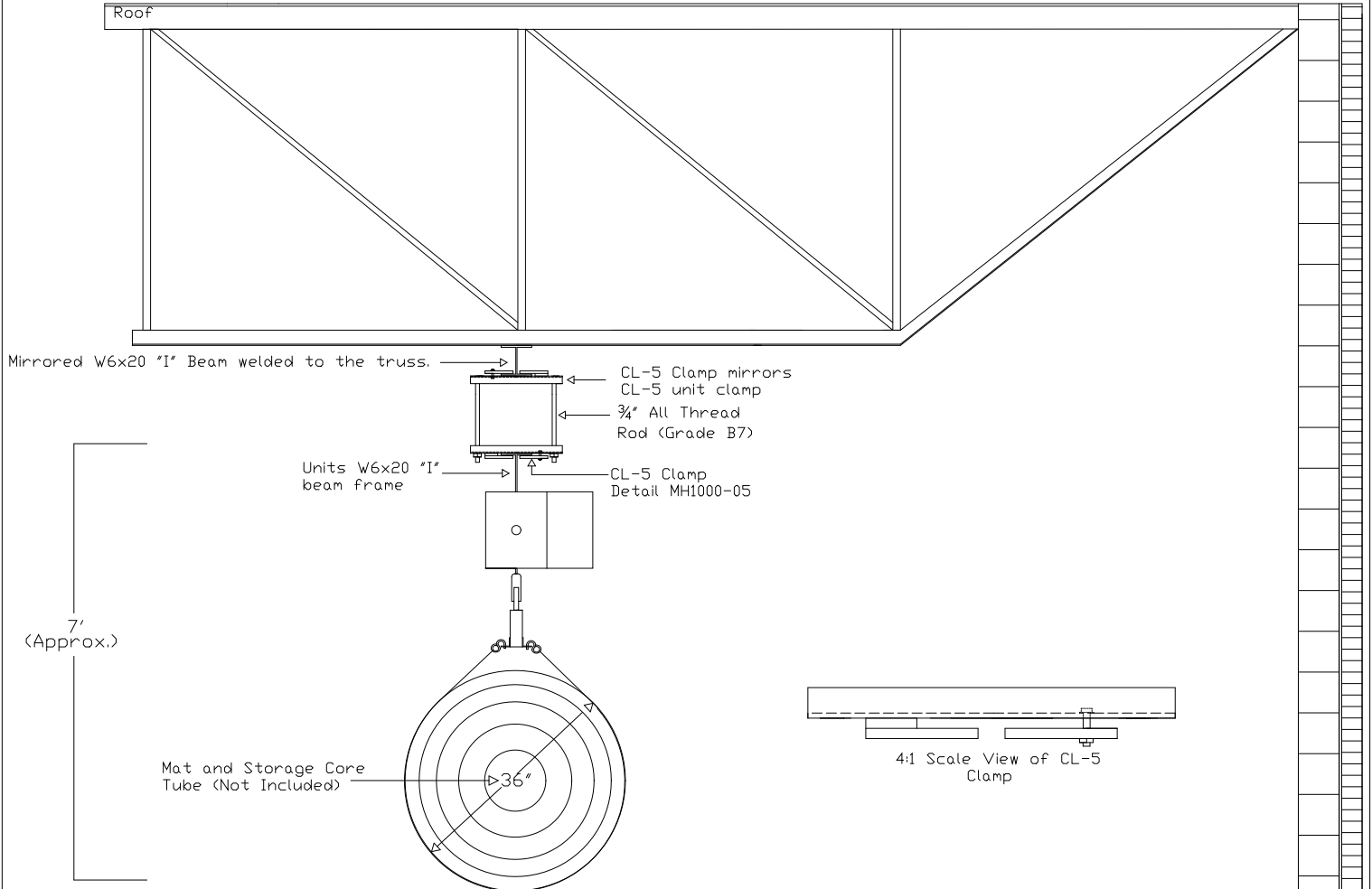


Illustrates: Perpendicular suspension for truss spans greater than 20'.



Note: In installation where truss centers are greater than 20' a mirrored W6x20 I beam is used for perpendicular suspension to truss.

Note: Structural Strength of Truss & Wall NOT Responsibility of Mat Hoist Manufacturer.

|  |  |   |
|--|--|---|
| NGE Inc.<br>P.O. Box 370/Industrial Park<br>302 North Erickson<br>Roland, IA 50236 | Mat Hoist® 500<br><br>Drawing MH500-21 | Phone: (515)-388-4118<br>Fax: (515) 388-4340<br>Email: mathoist@mathoist.com<br>Website: www.mathoist.com |
|--|--|---|