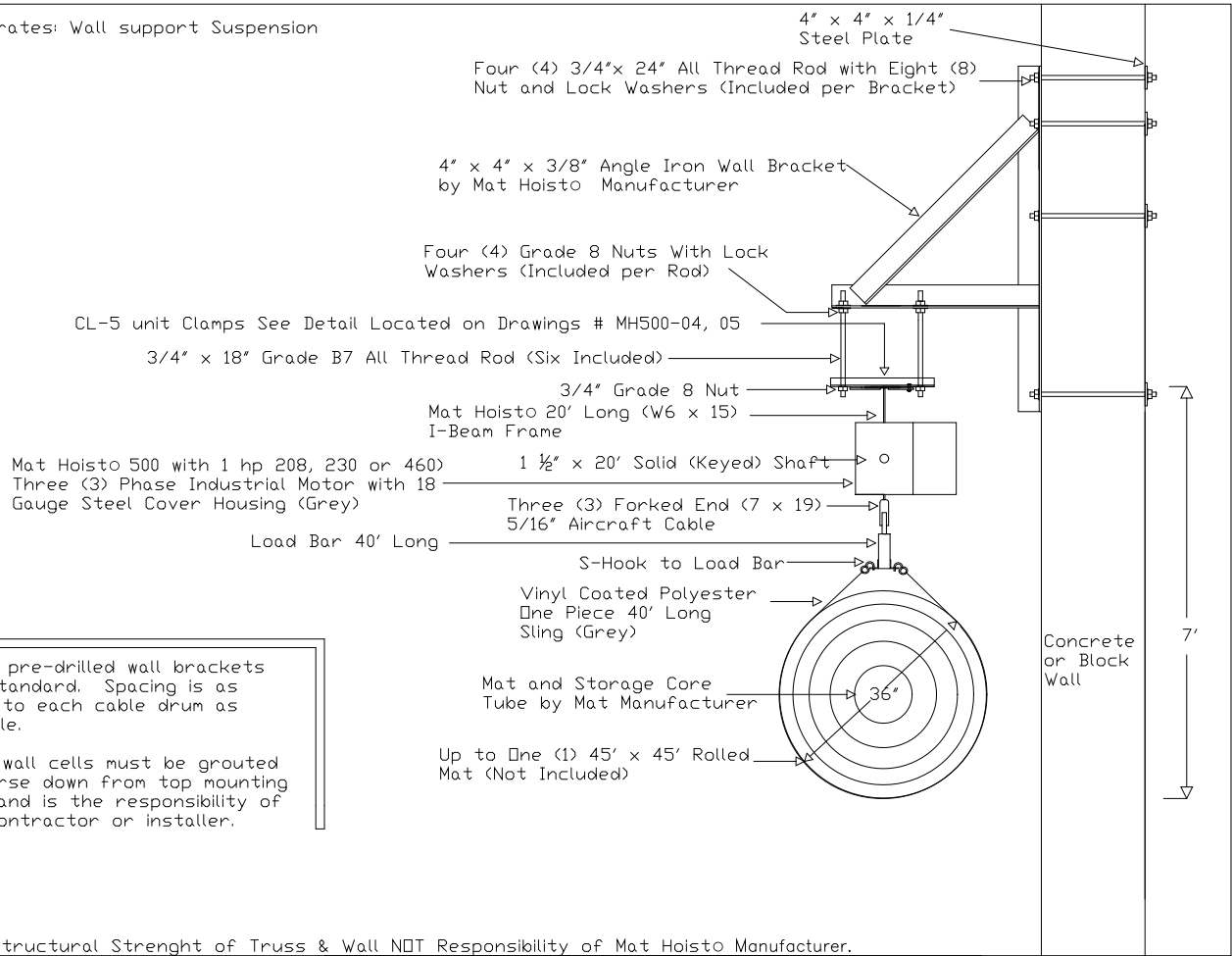


Illustrates: Wall support Suspension



Three pre-drilled wall brackets are standard. Spacing is as close to each cable drum as possible.

Block wall cells must be grouted 4 course down from top mounting bolt, and is the responsibility of the contractor or installer.

Note: Structural Strength of Truss & Wall NOT Responsibility of Mat Hoisto Manufacturer.

<p>NGE Inc. P.O. Box 370/Industrial Park 302 North Erickson Roland, IA 50236</p>	<p>Mat Hoisto 500 Wall Mount System Side View</p>	<p>Phone: (515)-388-4118 Fax: (515) 388-4340 Email: mathoist@mathoist.com Website: www.mathoist.com</p>
--	---	---

Drawing #
MHS00-03