

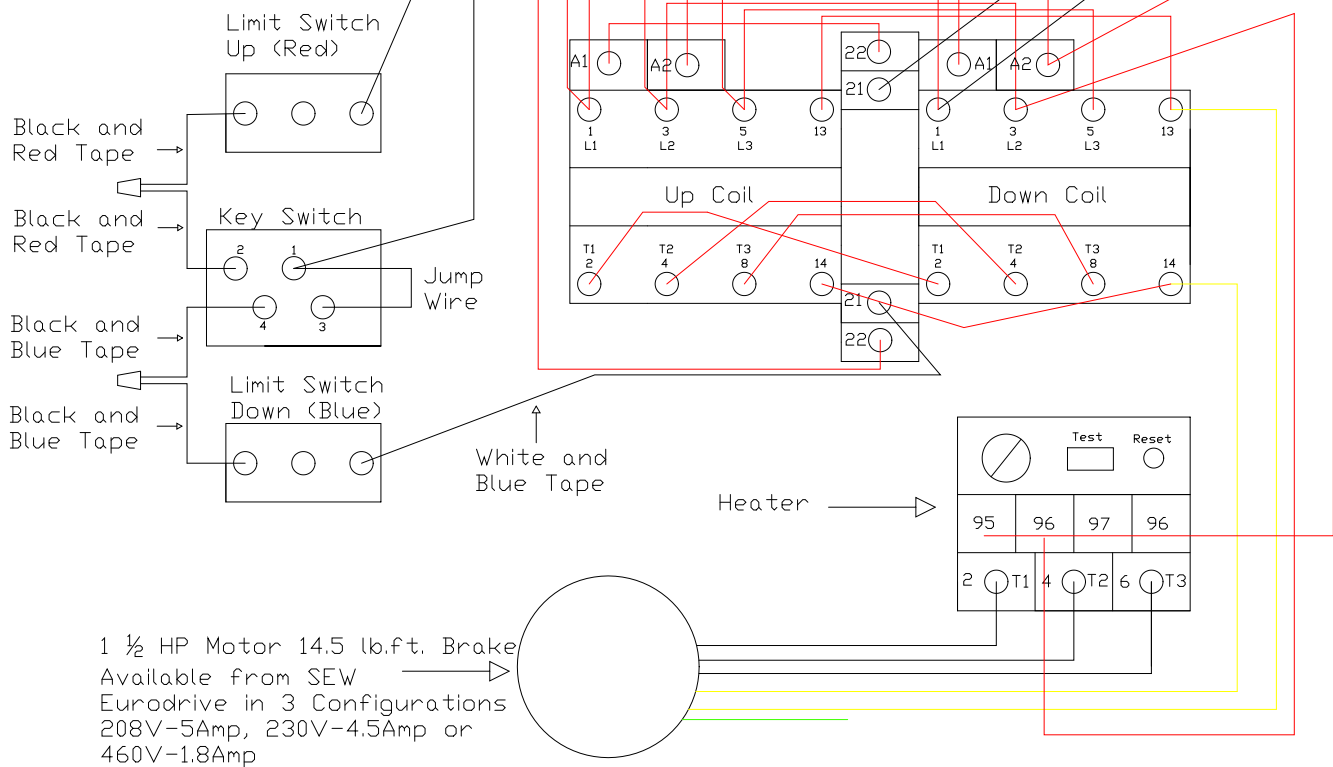
Electrician Note: This unit has been factory tested. Rotation must be correct with limit switches. See key switch name plate for Up/Down direction. DO NOT locate the key switch under the Mat Hoisto. Place switch to one side of unit where motion can be safely viewed.

Building Source Power

Green - Ground
Yellow - Break
Black - Power

208,230 or 460 volts

White and Red Tape



NGE Inc.
P.O. Box 370/Industrial Park
302 North Erickson
Roland, IA 50236

Mat Hoisto 1000
Mat Hoisto Wiring Schematic

Phone: (515)-388-4118
Fax: (515) 388-4340
Email: mathoist@mathoist.com
Website: www.mathoist.com