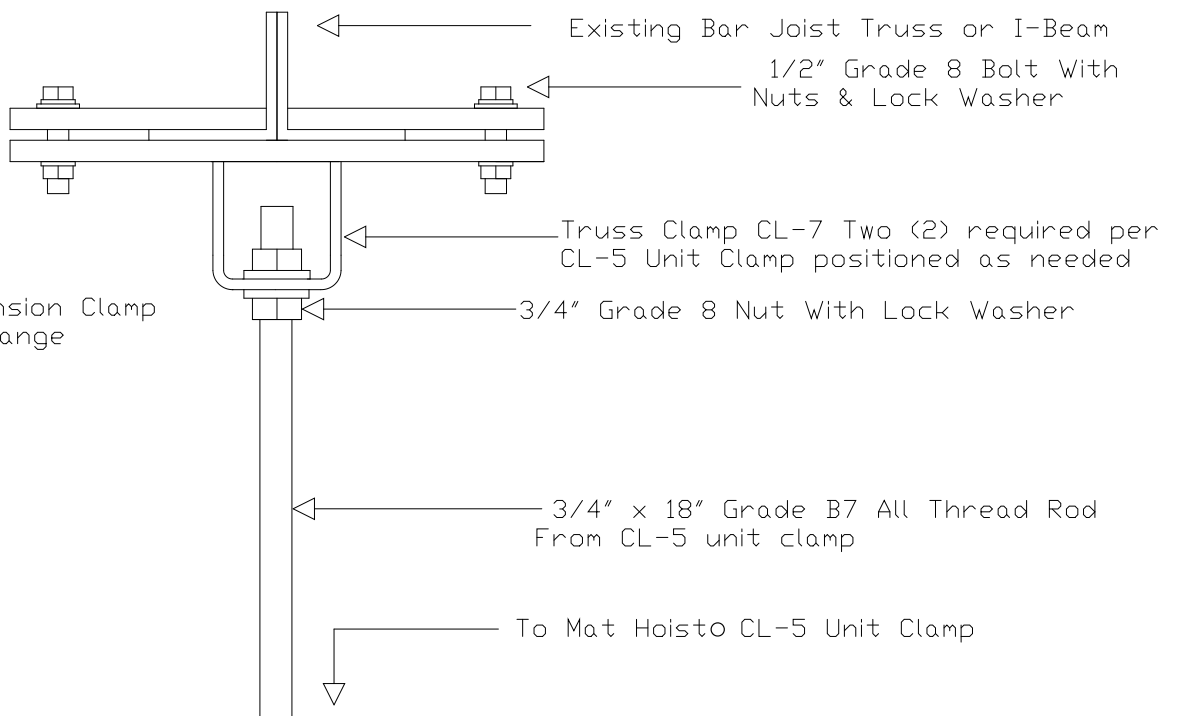


17,500 lbs. Safety
Certified Load Tested

Illustrates: Direct attachment
when suspended from buildings
solid back to back angle.



Note: CL-7 suspension Clamp
Fits 3"-9" Wide Flange

Note: Structural Strength of Truss & Wall NOT Responsibility of Mat HoistO Manufacturer.

NGE Inc.
P.O. Box 370/Industrial Park
302 North Erickson
Roland, IA 50236

Mat HoistO 1000
CL-7 suspension Clamp
Drawing #
MH1000-06

Phone: (515)-388-4118
Fax: (515) 388-4340
Email: mathoist@mathoist.com
Website: www.mathoist.com