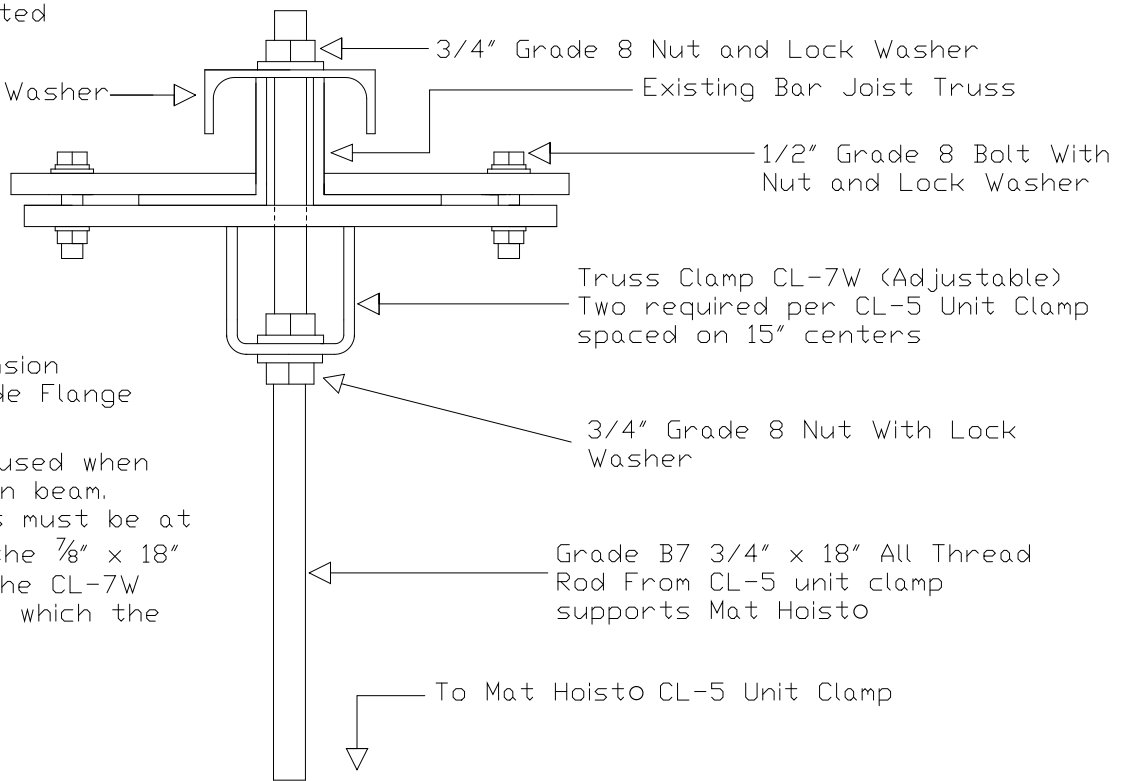


17,500 lbs. Safety
Certified Load Tested

4" x 4" C-Channel Washer



Note: CL-7W suspension
Clamp Fits 3"-9" Wide Flange

Note: CL-7W clamp used when
web space exists on beam.
Width between webs must be at
least 7/8" to allow the 7/8" x 18"
B7 rod passage. The CL-7W
has a hole through which the
rod passes.

Note: Structural Strength of Truss & Wall NOT Responsibility of Mat Hoisto Manufacturer.

NGE Inc.
P.O. Box 370/Industrial Park
302 North Erickson
Roland, IA 50236

Mat Hoisto 1000
CL-7W Suspension Clamp
Drawing #
MH1000-07

Phone: (515)-388-4118
Fax: (515) 388-4340
Email: mathoist@mathoist.com
Website: www.mathoist.com