

17,500 lbs Safety
Certified Load Tested

CL-5 unit clamps attach to suspension clamps,
or structural truss or wall bracket. View
Drawings MH1000-06,07 for Attachments

See Drawing # MH1000-04

Four (4) Grade 8 Nuts With Lock
Washers Included

3/4" x 18" Grade B7 All Thread Rod Included

3/4" Grade 8 Nut
Mat Hoisto 20' Long I-Beam
(W6 x 20) Frame

2" Diameter x 20' Long
Solid (Keyed) Shaft

Mat Hoisto with 1 1/2hp 208, 230 or 460
Three (3) Phase Industrial Motor with 18
Gauge Steel Cover Housing (Grey)

Forked End (7 x 19) 5/16"
Aircraft Cable

S-Hook to Load Bar

Load Bar (2" x 6" Tubing) 40' Long

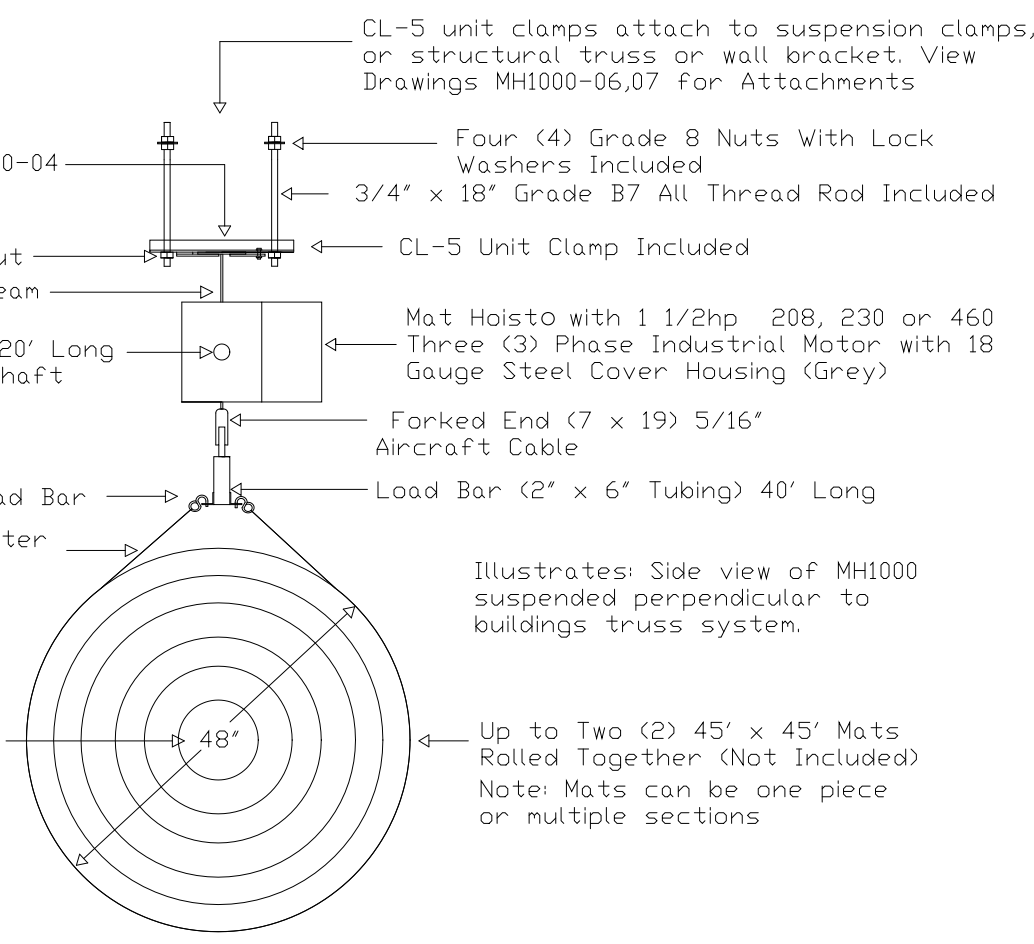
Vinyl Coated Polyester
One Piece 40' Long
Sling (Grey)

Illustrates: Side view of MH1000
suspended perpendicular to
buildings truss system.

9'
(Approx.)

Mat Storage Tube by
Mat Manufacturer

Up to Two (2) 45' x 45' Mats
Rolled Together (Not Included)
Note: Mats can be one piece
or multiple sections



Note: Structural Strength of Truss & Wall NOT Responsibility of Mat Hoisto Manufacturer.

NGE Inc.
P.O. Box 370/Industrial Park
302 North Erickson
Roland, IA 50236

Mat Hoist 1000

Side View

Drawing #
MH1000-02

Phone: (515)-388-4118
Fax: (515) 388-4340
Email: mathoist@mathoist.com
Website: www.mathoist.com