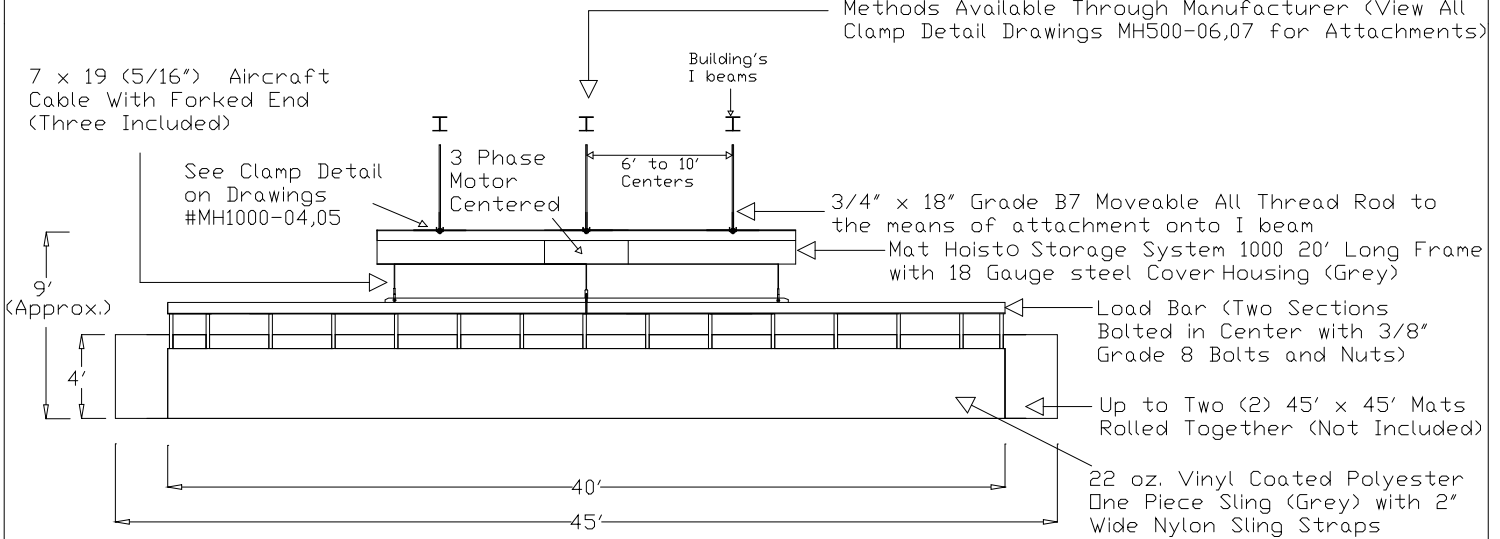


Illustrates: Front view of MH1000 suspended perpendicular to I beams.

17,500 lbs. Safety Certified Load Tested

7 x 19 (5/16") Aircraft Cable With Forked End (Three Included)

Ceiling Truss & Wall Universal Suspension Clamping Methods Available Through Manufacturer (View All Clamp Detail Drawings MH500-06,07 for Attachments)



Note: 3 Phase Motor voltage options, 208, 230, or 460

Note: Shipping weight of hoist = 1850lbs. Approx weight of 2 full size mats = 4000lbs.

Note: Structural Strength of Truss & Wall NDT Responsibility of Mat HoistO Manufacturer.

NGE Inc.  
P.O. Box 370/Industrial Park  
302 North Erickson  
Roland, IA 50236

Mat HoistO 1000  
Front View  
Drawing #  
MH1000-01

Phone: (515)-388-4118  
Fax: (515) 388-4340  
Email: mathoist@mathoist.com  
Website: www.mathoist.com