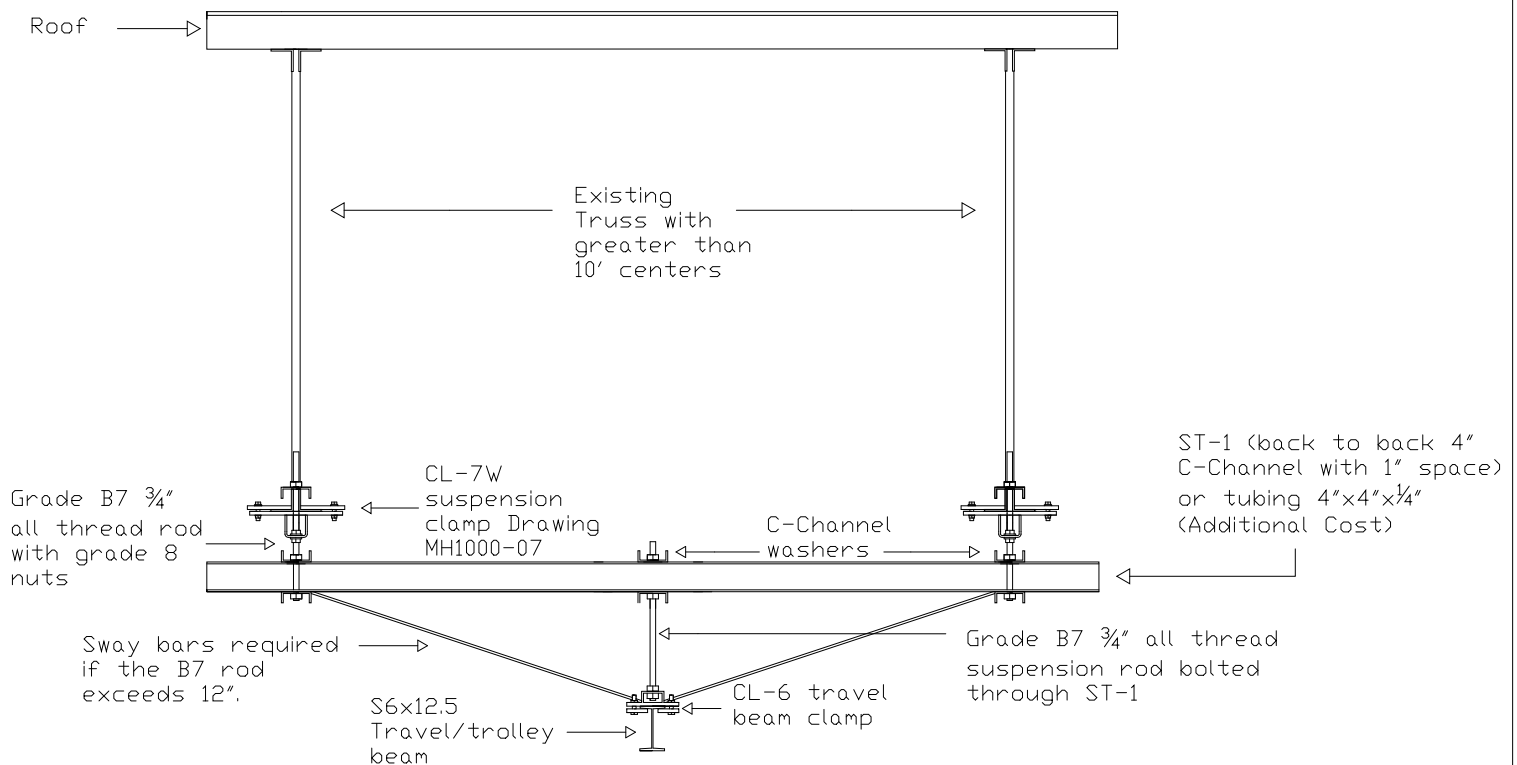


Illustrates: Suspension of travel beam for transport systems from added ST-1 cross steel clamped to truss



Installers Note: When vertical drop exceeds 12" angle steel sway bars must be used.

Note: Structural Strength of Truss & Wall NOT Responsibility of Mat Hoisto Manufacturer.

NGE Inc.
P.O. Box 370/Industrial Park
302 North Erickson
Roland, IA 50236

Mat Hoisto 2000
Suspension from an ST-1
Drawing MH2000-10

Phone: (515)-388-4118
Fax: (515) 388-4340
Email: mathoist@mathoist.com
Website: www.mathoist.com