

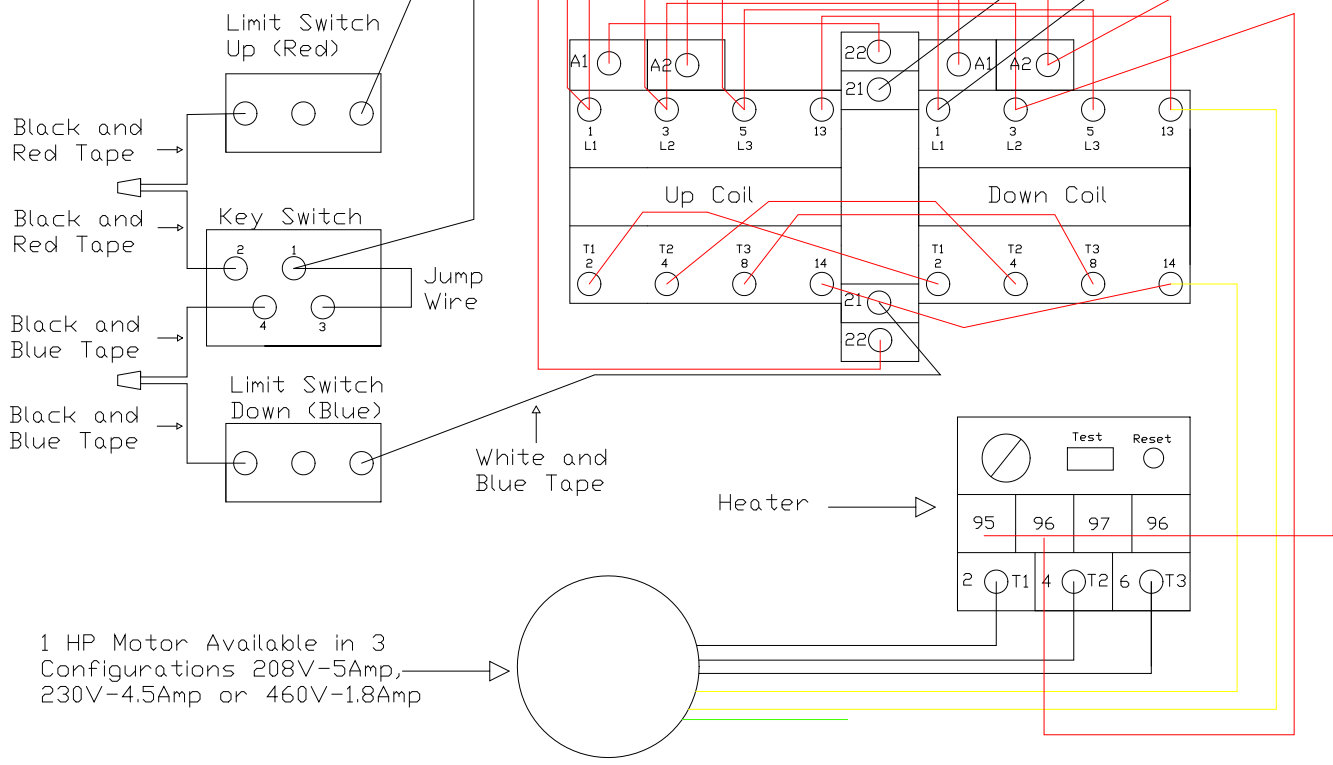
Electrician Note: This unit has been factory tested. Rotation must be correct with limit switches. See key switch name plate for Up/Down direction. DO NOT locate the key switch under the Mat Hoisto. Place switch to one side of unit where motion can be safely viewed.

Building Source Power

208,230 or 460 volts

White and Red Tape

Green - Ground
Yellow - Break
Black - Power



1 HP Motor Available in 3 Configurations 208V-5Amp, 230V-4.5Amp or 460V-1.8Amp

NGE Inc.
P.O. Box 370/Industrial Park
302 North Erickson
Roland, IA 50236

Mat Hoist 500
Mat Hoist Wiring Schematic

Phone: (515)-388-4118
Fax: (515) 388-4340
Email: mathoist@mathoist.com
Website: www.mathoist.com