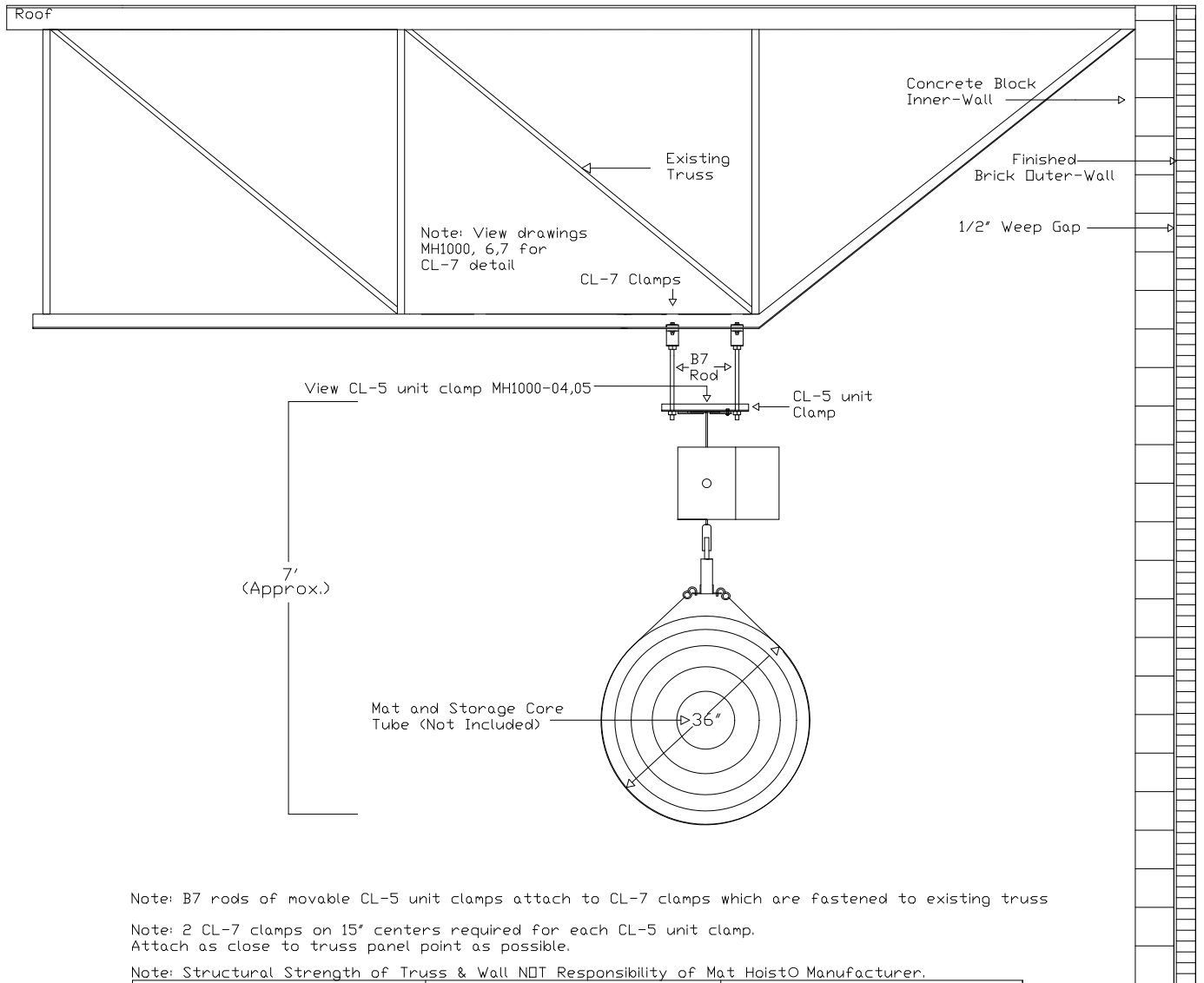


Illustrates: MatHoistO suspended perpendicular onto multiple truss.



Note: B7 rods of movable CL-5 unit clamps attach to CL-7 clamps which are fastened to existing truss

Note: 2 CL-7 clamps on 15" centers required for each CL-5 unit clamp. Attach as close to truss panel point as possible.

Note: Structural Strength of Truss & Wall NDT Responsibility of Mat HoistO Manufacturer.

NGE Inc.
P.O. Box 370/Industrial Park
302 North Erickson
Roland, IA 50236

Mat HoistO
500 Drawing MH500-22

Phone: (515)-388-4118
Fax: (515) 388-4340
Email: mathoist@mathoist.com
Website: www.mathoist.com